

Schritt 1

Teilnahmeanfrage absenden



[Der AStA](#)

[Neuigkeiten](#)

[Referate](#)

[Service & Angebote](#) ▾

[Veranstaltungen](#) ▾

[Ver...](#)

Ideen für Events und Projekte?

Deine Teilnahmeanfrage

Schicke uns deine E-Mailadresse, und am Tag der Veranstaltung erhaltest du den Teleparty Link.

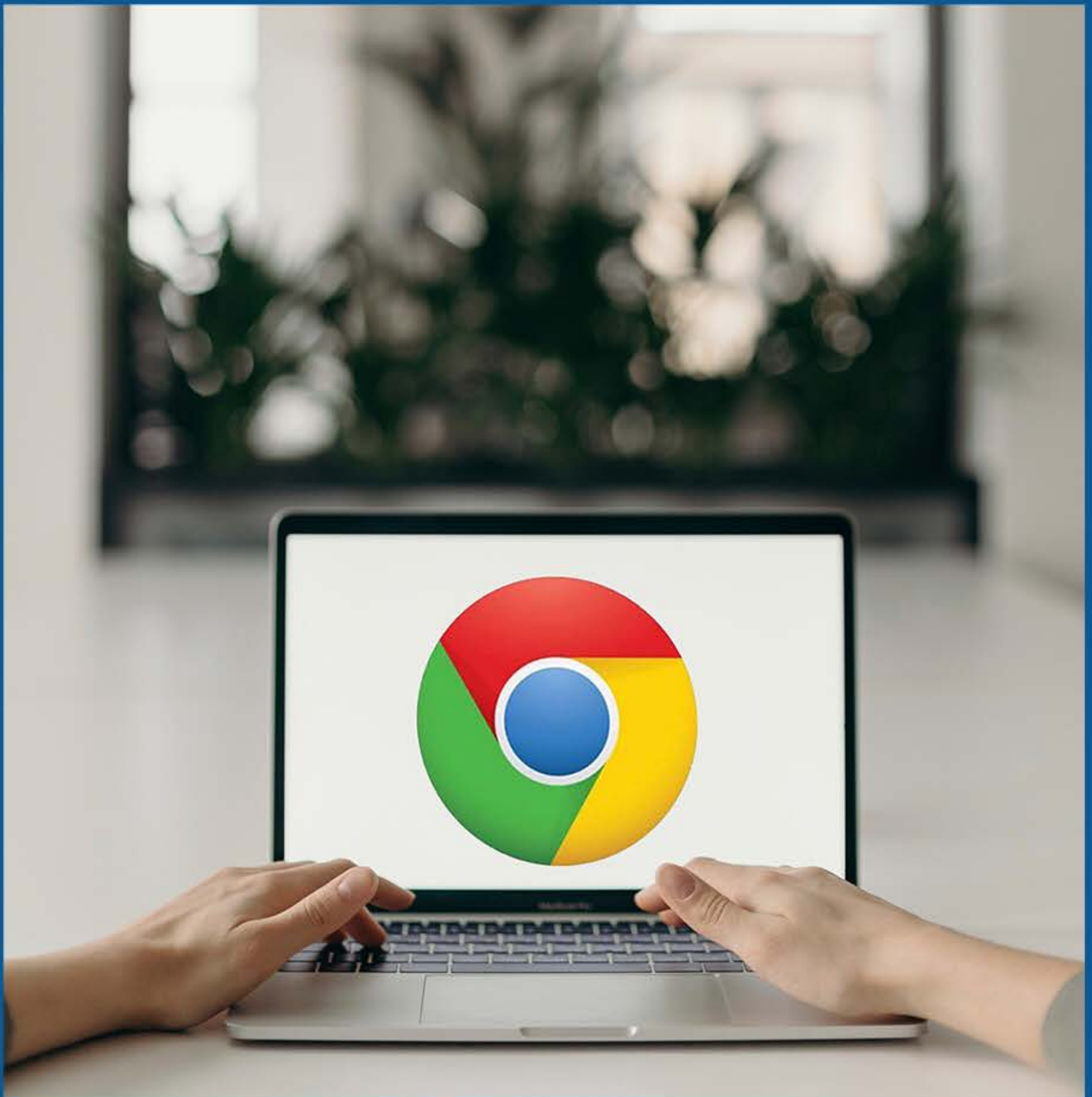
Deine Studierendenmailadresse *

Anfrage senden

Schritt 2

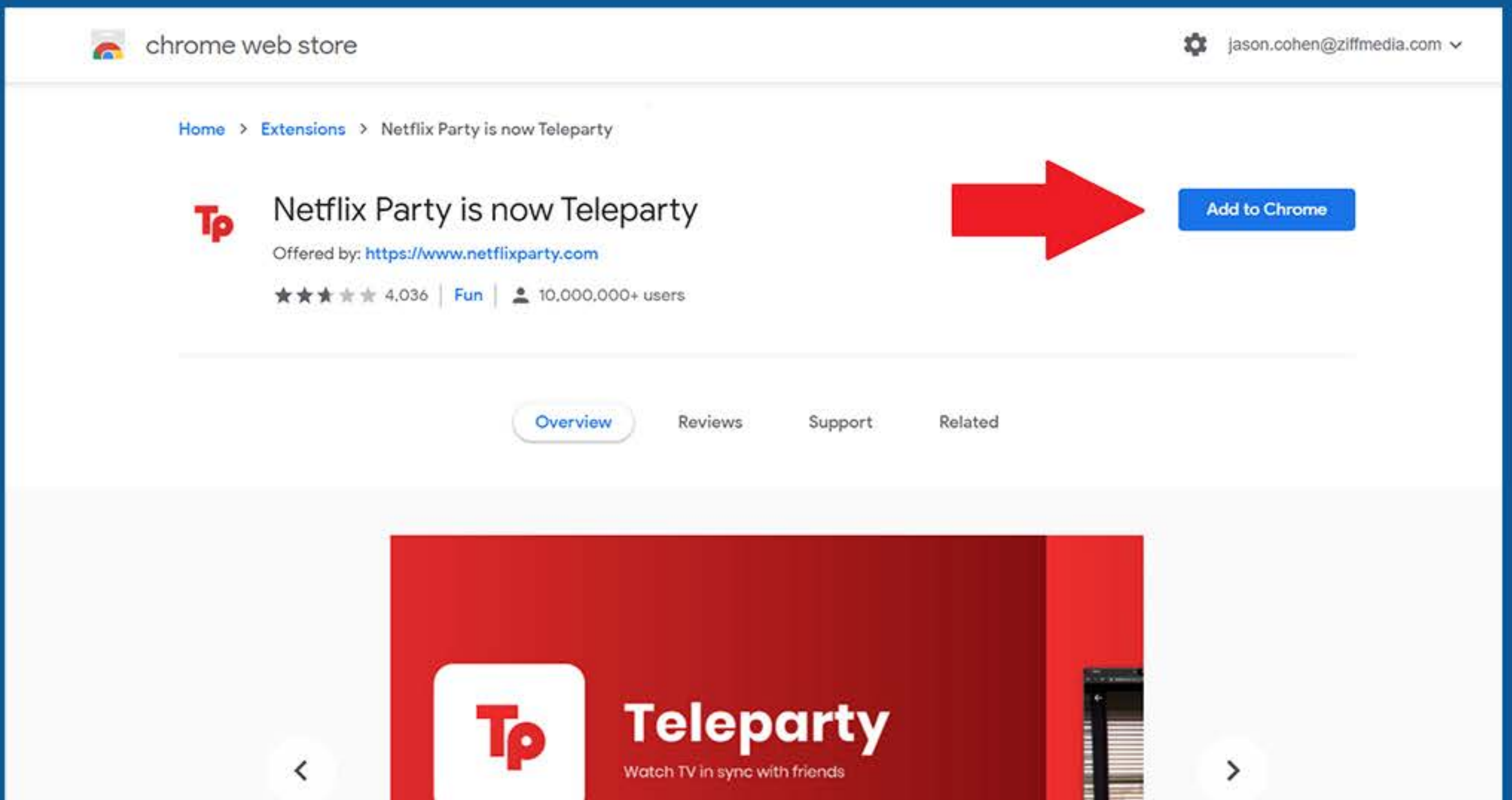
Chrome Browser öffnen

(nur in Chrome verfügbar)



Schritt 3

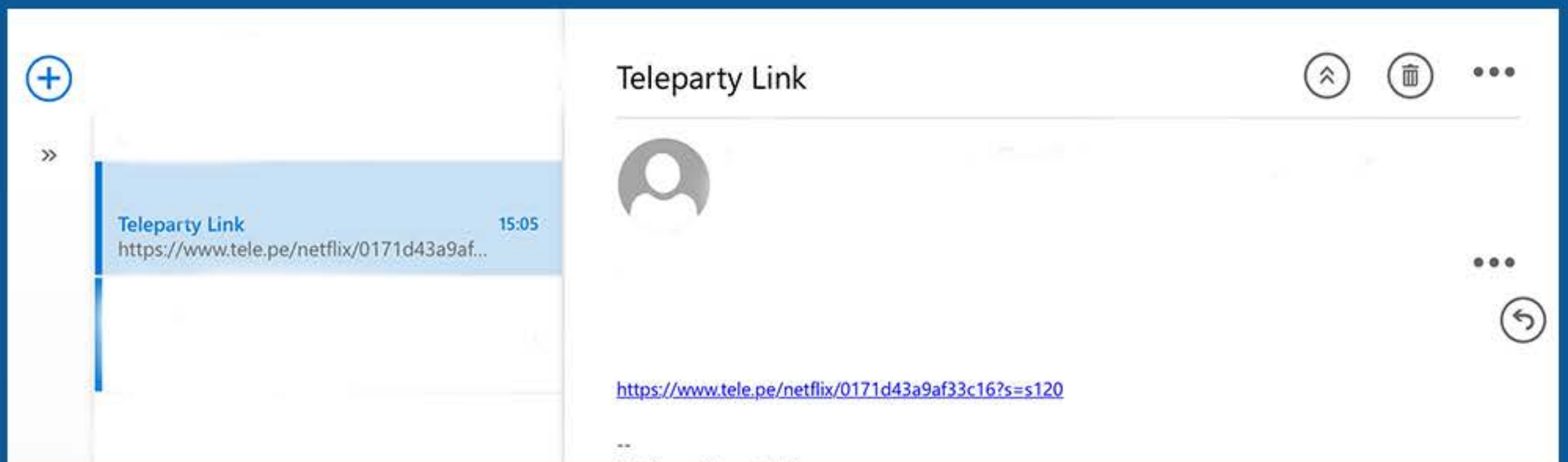
Über teleparty.com die
Browser-Extension
installieren



The screenshot shows the Chrome Web Store interface. At the top, it says 'chrome web store' and 'jason.cohen@ziffmedia.com'. The breadcrumb trail is 'Home > Extensions > Netflix Party is now Teleparty'. The main content area features the extension's icon (a red 'Tp' logo), the title 'Netflix Party is now Teleparty', and the offerer 'https://www.netflixparty.com'. Below this, it shows a 4.036 star rating and '10,000,000+ users'. A large red arrow points from the extension information to a blue 'Add to Chrome' button. Below the main content, there are tabs for 'Overview', 'Reviews', 'Support', and 'Related'. At the bottom, a red banner for 'Teleparty' is visible, with the tagline 'Watch TV in sync with friends'.

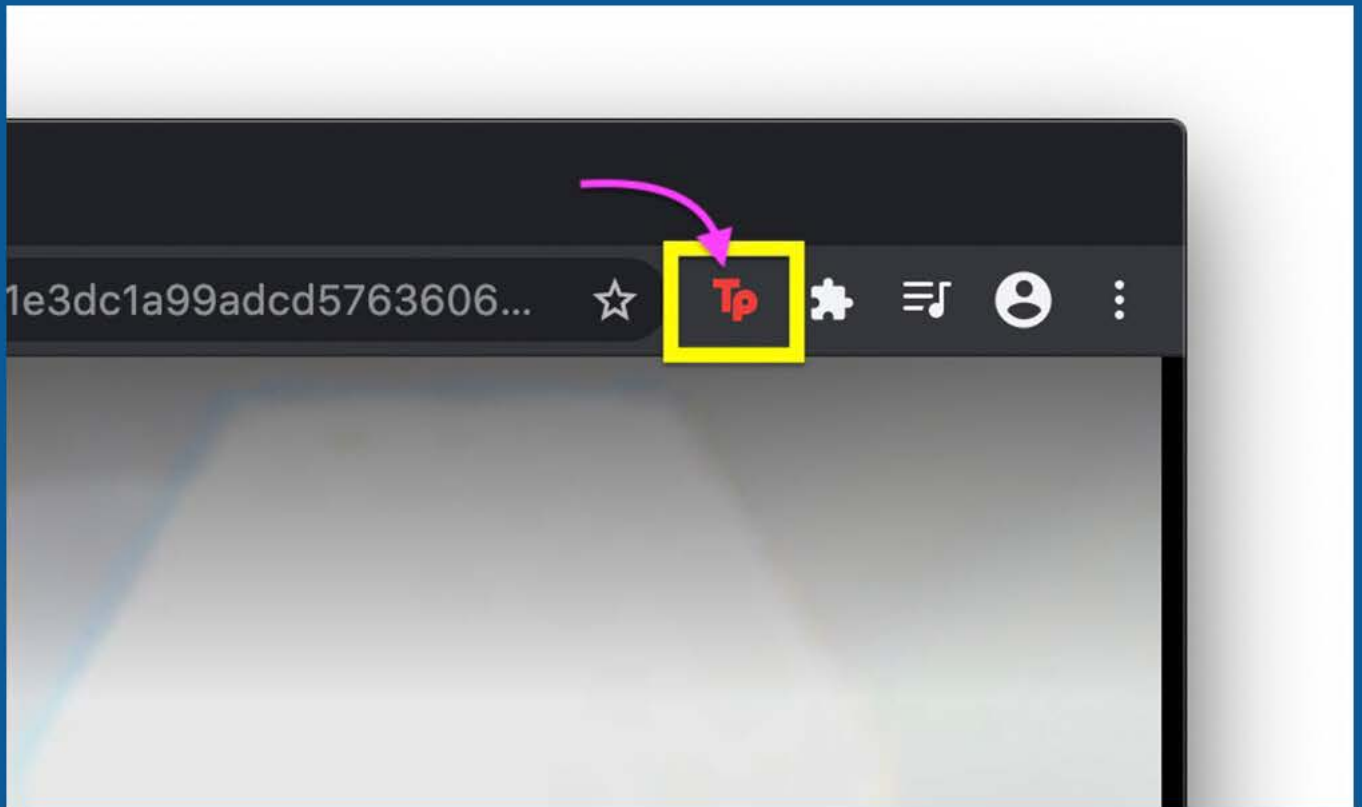
Schritt 4

Teleparty Link öffnen



Schritt 5

Rechts neben der
Adresse-Zeile auf das
rote TP Symbol klicken



Schritt 6

Film gemeinsam
genießen und chatten

